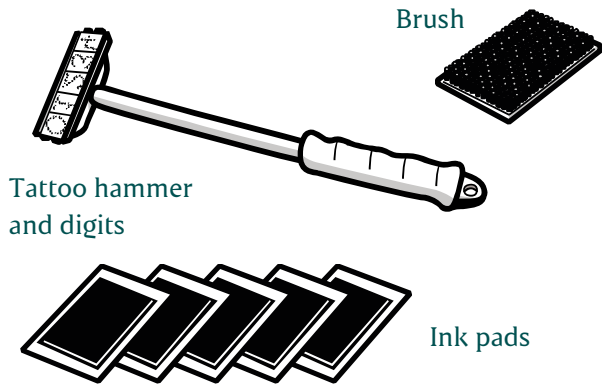


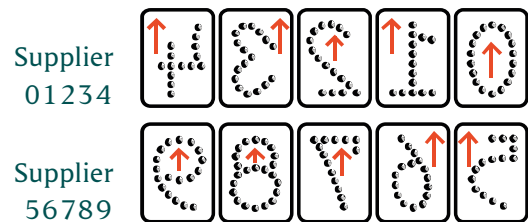
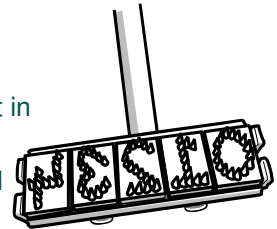
Instructions

1 Equipment:



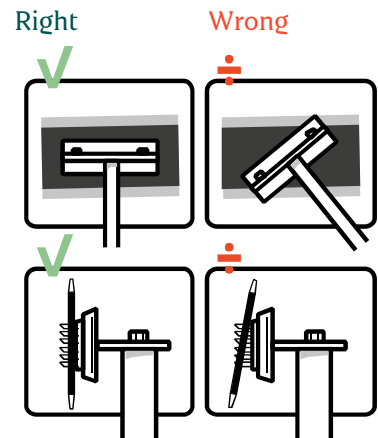
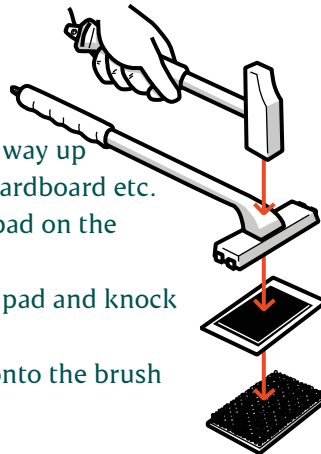
2 Correct mounting of digits:

- The arrows should point in the same direction
- Supplier-number is read from the right towards left



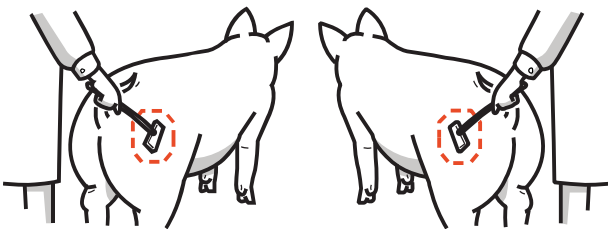
3 Ink pad assembly:

- Check that all the digits are facing the right way up by pressing the hammer against a piece of cardboard etc.
- Distribute the ink in the pad and place the pad on the brush
- Put the tattoo hammer in the middle of the pad and knock the needles through the pad
- Bang the tattoo hammer a couple of times onto the brush so that the ink spreads out to the needles



4 Correct tattooing:

- One tattoo on each ham
- Max. 75-100 tattoos per pad
- New delivery = new ink pad



5 Cleaning:

After use, clean the hammer and check for defective digits

